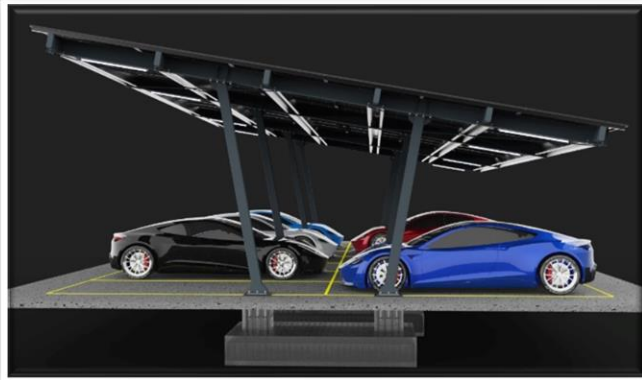




## ES.CARPORT.003



## Technical features

Inclination	<b>10° (variable)</b>
Steel pipe pillars	<b>180 x 100 x 6mm S275JRH</b>
Foundations structured with steel rod	<b>M16</b>
Steel pipe beams	<b>PRS200X12 + 250X6 + 100X12mm S275JR</b>
Steel Purlin	<b>MadreMax 300x2,5 (S350GD + Z275)</b>
Carport with single or double slope	
Watertight version	<b>Under quotation</b>
Electric car chargers	<b>Under quotation</b>
LED lighting system	<b>Under Quotation</b>



## Warranty

- Manufacturing warranty: **15 years**
- Anticorrosive treatment made by hot dip galvanisation and **20 years** of warranty. Zinc Coating: average 93µm;

## Quality

- Profile and flat products in steel S275 according to the standard En 10025-2;
- Concrete type C20/25 (P) CLO, 40 D22 S2;
- Additional options of anticorrosive treatment and painting (under quotation);

## Standards and Regulations

### Steel Structure:

- EN 1990 Eurocode 0: Basis of structural design
- EN 1991-1-3 Eurocode 1: Action on structures – Part 1-3: Snow loads
- EN 1991-1-4 Eurocode 1: Action on structures – Part 1-4: Wind actions
- EN 1993-1-1 Eurocode 3: Design of steel structures – Part 1-1: General rules and rules for building
- EN 1993-1-3 Eurocode 3: Design of steel structures – Part 1-3: General rules
- EN 1993-1-5 Eurocode 3: Design of steel structures – Part 1-5: Plated structural elements
- EN 1993-1-8 Eurocode 3: Design of steel structures – Part 1-8: Design of Joints

### Foundations:

- EN 1992-1-1 Eurocode 2: Design of concrete structures – Part 1-1: General rules and rules for buildings
- EN 1992-4 Eurocode 2: Design of concrete structures – Part 4: Design of fastenings for use in concrete
- EN 1997-1 Eurocode 7: Geotechnical design – Part 1: General rules

## Benefits

- Brings together the use of sunshade product with the capacity to produce renewable energy;
- Excelent finishing and many color options;
- Standard or customized solution (under quotation);
- High resistance against corrosion;
- Strengthens the image of sustainability;
- Robust design with high structural resistance;
- Complete structural calculation tailored to the customer;